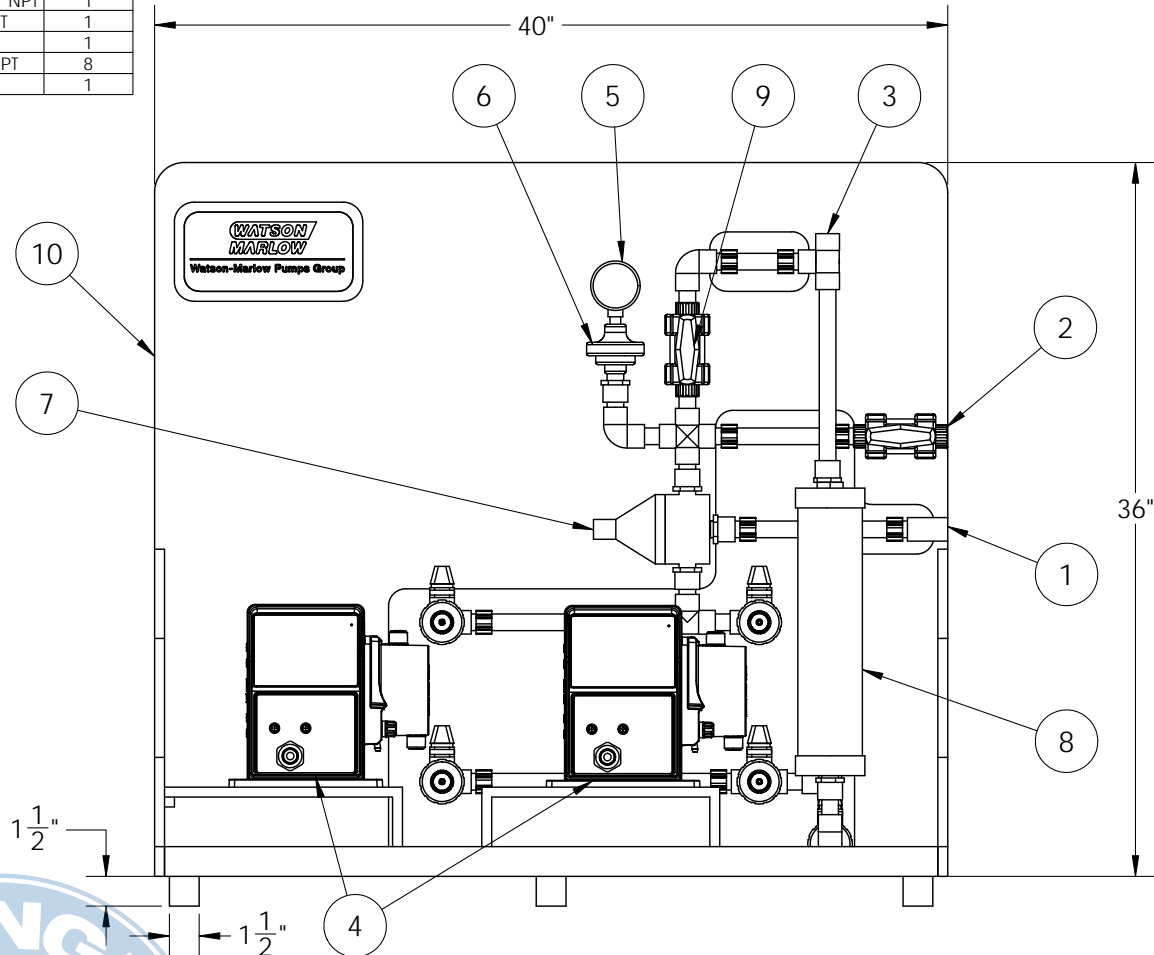


ITEM NO.	DESCRIPTION	QUANTITY
1	SUCTION - 1/2" NPT	1
2	DISCHARGE - 1/2" NPT	1
3	VENT	1
4	PUMP - QDOS30 PUMP	2
5	PRESSURE GAUGE - 1/4" NPT	1
6	DIAPHRAM SEAL - 1/2" NPT X 1/4" NPT	1
7	PRESSURE RELIEF VALVE - 1/2" NPT	1
8	CALIBRATION COLUMN - 500 mL	1
9	TRUE UNION BALL VALVE - 1/2" NPT	8
10	POLYPROPYLENE SKID	1



2 FRONT VIEW

3rd ANGLE PROJECTION
DO NOT SCALE

CRITICAL DIMENSIONS ARE MARKED

Copyright reserved. This drawing is to be used for reference purposes only and no part may be reproduced, stored in a retrieval system or used by any third party for any other purpose without written permission from WATSON-MARLOW LIMITED.

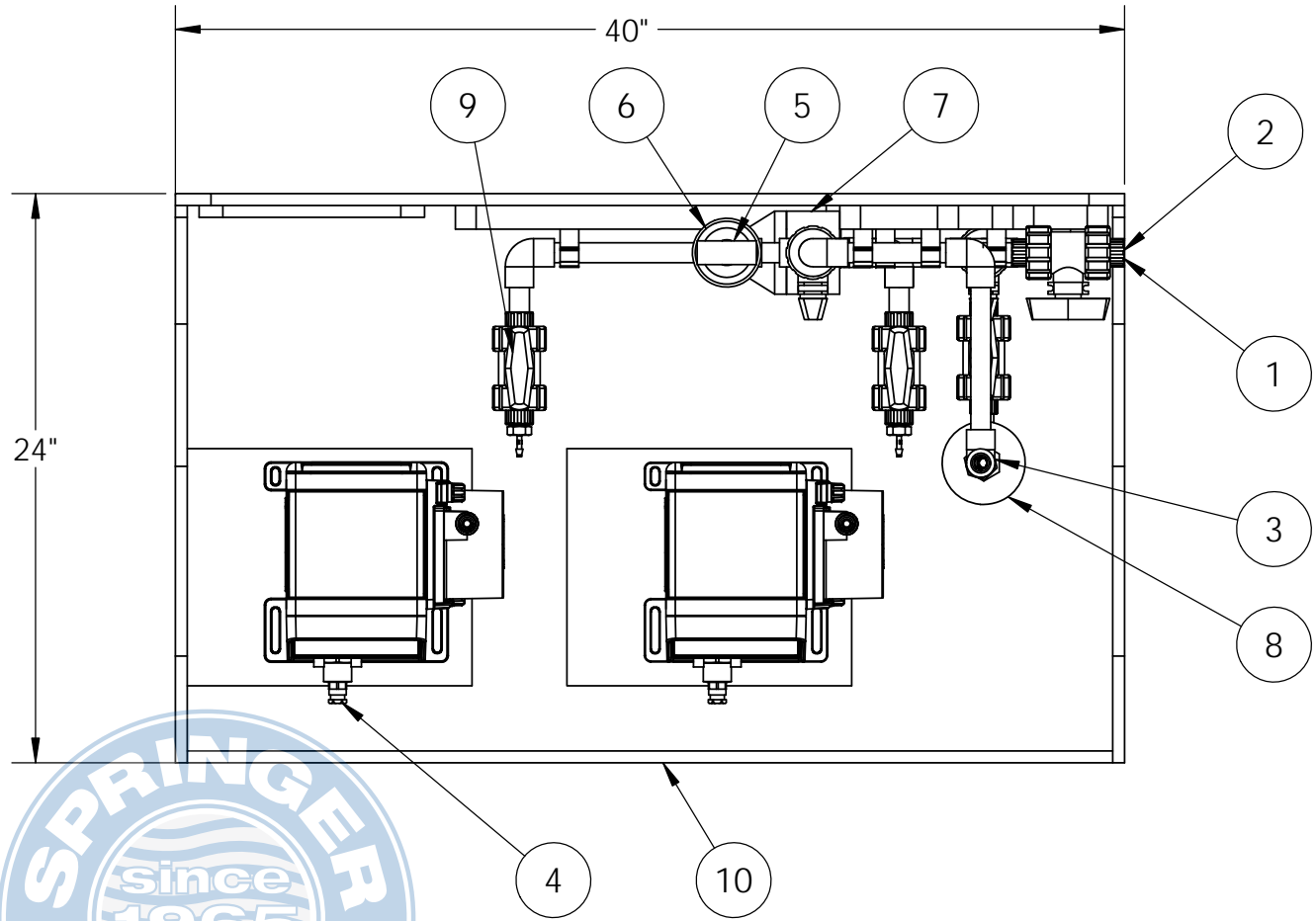
ORIGINAL SHT. SIZE ANSI A
ORIGINAL SCALE 1:8
DIMENSIONS IN INCHES
TOLERANCES UNLESS OTHERWISE STATED
MILLIMETRES xxx ANGULAR ± 0°
ONE DECIMAL xxx
TWO DECIMAL xxx
HOLES xxx

Watson-Marlow Pumps Group
37 Upton Technology Park, Wilmington, MA 01887
Tel: 800-282-8823
Fax: 978-658-0041

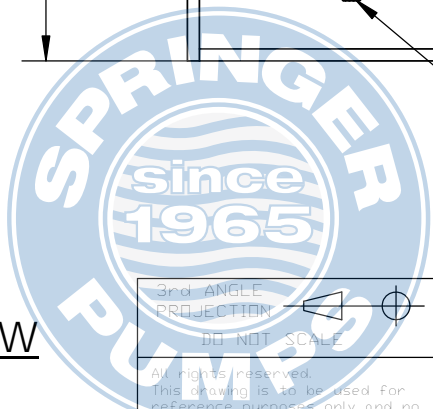
TITLE
DUTY-STANDBY
QDOS30 DUPLEX CHEMICAL METERING SKID

DRAWN	WWW	DATE	5/13/13
RELEASED		DATE	
FIRST USED ON			
SIMILAR TO			
SUPERSEDES			
SHEET	2	OF	4
DRAWING NO.	QDOS30DPLXSKID		

ITEM NO.	DESCRIPTION	QUANTITY
1	SUCTION - 1/2" NPT	1
2	DISCHARGE - 1/2" NPT	1
3	VENT	1
4	PUMP -ODOS30 PUMP	2
5	PRESSURE GAUGE - 1/4" NPT	1
6	DIAPHRAM SEAL - 1/2" NPT X 1/4" NPT	1
7	PRESSURE RELIEF VALVE - 1/2" NPT	1
8	CALIBRATION COLUMN - 500 mL	1
9	TRUE UNION BALL VALVE - 1/2" NPT	8
10	POLYPROPYLENE SKID	1



3 TOP VIEW



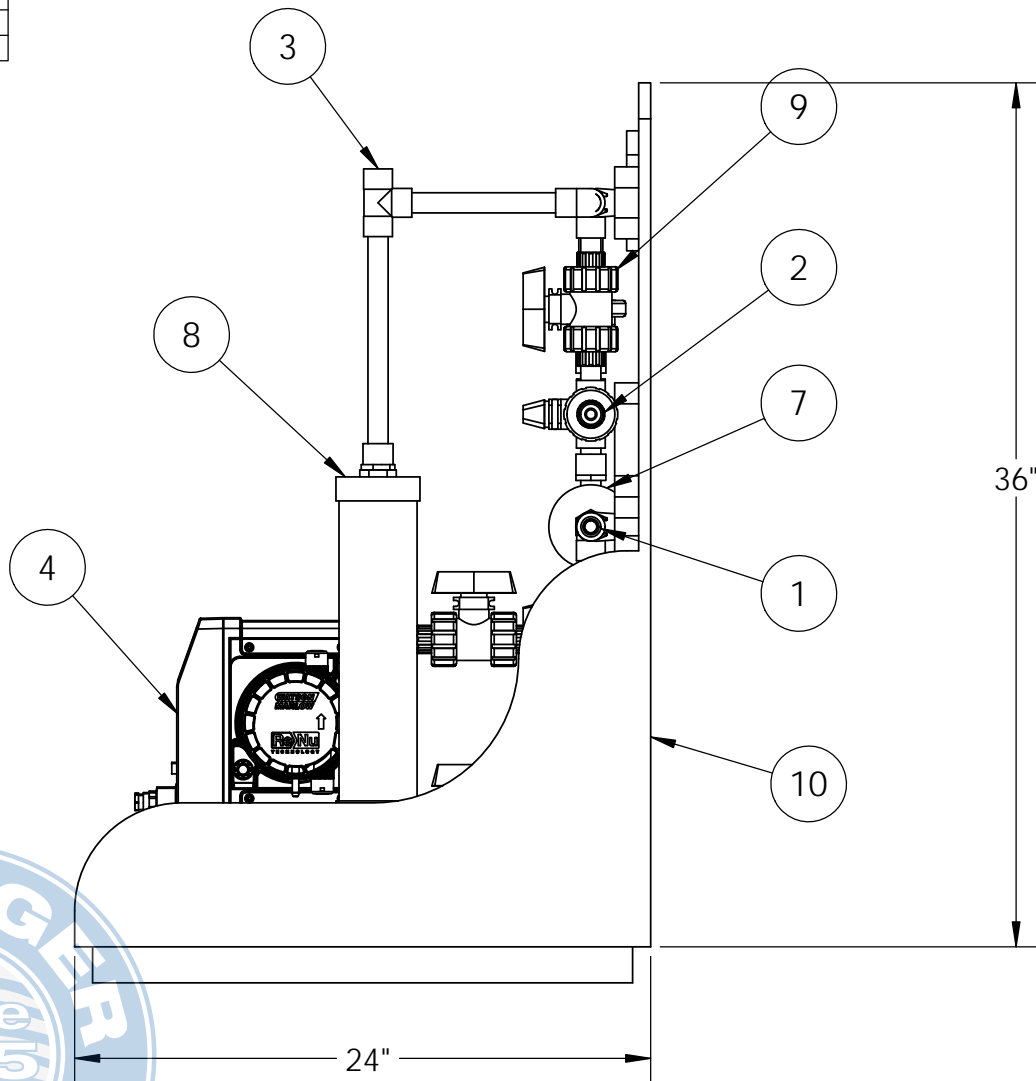
3rd ANGLE PROJECTION
DO NOT SCALE
All rights reserved.
This drawing is to be used for reference purposes only and no part may be reproduced, stored in a retrieval system or used by a third party for any other purpose without written permission from WATSON-MARLOW LIMITED.

ORIGINAL SHT. SIZE ANSI A
ORIGINAL SCALE 1:1
DIMENSIONS IN INCHES
TOLERANCES UNLESS OTHERWISE STATED
MILLIMETRES ±XX ANGULAR ± 0°
ONE DECIMAL ±XX
TWO DECIMAL ±XX
HOLES ±XX

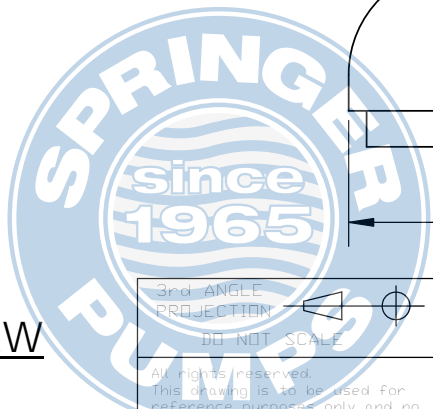
Watson-Marlow Pumps Group
37 Upton Technology Park, Wilmington, MA 01887
Tel: 800-282-8823
Fax: 978-658-0041
TITLE
DUTY-STANDBY
ODOS30 DUPLEX CHEMICAL METERING SKID

DRAWN	WWW	DATE	5/13/13
RELEASED		DATE	
FIRST USED ON			
SIMILAR TO			
SUPERSEDES			
SHEET	3	OF	4
DRAWING NO.			

ITEM NO.	DESCRIPTION	QUANTITY
1	SUCTION - 1/2" NPT	1
2	DISCHARGE - 1/2" NPT	1
3	VENT	1
4	PUMP - QDOS30 PUMP	2
5	PRESSURE GAUGE - 1/4" NPT	1
6	DIAPHRAM SEAL - 1/2" NPT X 1/4" NPT	1
7	PRESSURE RELIEF VALVE - 1/2" NPT	1
8	CALIBRATION COLUMN - 500 mL	1
9	TRUE UNION BALL VALVE - 1/2" NPT	8
10	POLYPROPYLENE SKID	1



4 SIDE VIEW



3rd ANGLE PROJECTION
DO NOT SCALE

All rights reserved.
This drawing is to be used for reference purposes only and no part may be reproduced, stored in a retrieval system or used by a third party for any other purpose without written permission from WATSON-MARLOW LIMITED.

ORIGINAL SHT. SIZE ANSI A	ORIGINAL SCALE 1:1
DIMENSIONS IN INCHES	TOLERANCES UNLESS OTHERWISE STATED
MILLIMETRES ±XX ANGULAR ± 0"	ONE DECIMAL ±XX
TWO DECIMAL ±XX	Holes ±XX

Watson-Marlow Pumps Group
37 Upton Technology Park, Wilmington, MA 01887
Tel: 800-282-8823
Fax: 978-658-0041

TITLE
DUTY-STANDBY
QDOS30 DUPLEX CHEMICAL METERING SKID

DRAWN WWW	DATE 5/13/13
RELEASED	DATE
FIRST USED ON	
SIMILAR TO	
SUPERSEDES	
SHEET 4 OF 4	
DRAWING NO. QDOS30DPLXSKID	