



QIS SERIES

NEW INTERNAL SEAL PUMP

The QIS is a new sanitary centrifugal pump with an Internal seal, ideal for sanitary and non-sanitary applications, perfect for the food, beverage and pharmaceutical industries.



Completely redesigned for greater efficiency and hygiene

CHARACTERISTICS

- 100% Electropolished
- Internal seal on all models (single and double)
- With a new back cover
- Energy saving
- More hygienic pump
- Fully drenable
- Semi open impeller.
- Greater efficiency
- Volute casing
- Up to 800 cP
- Design that complies with 3A and EHEDG standards
- Same footprint of an QC+ Pump



North America: 866 777 6060
Int'l: +1 267 404 2910

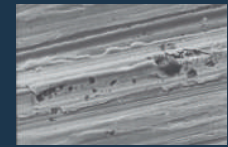
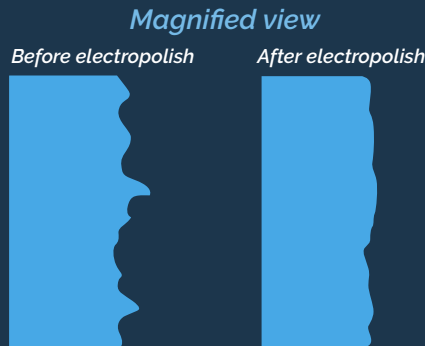
Springer Pumps
Springer Parts

www.springerpumps.com
www.springerparts.com

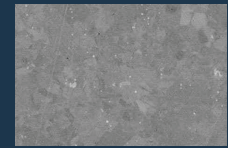
QIS Pump is 100% electropolished, which reduces its surfaces roughness, and improves its finish. Electropolished process is essential in the food, medical and pharmaceutical industries due to its optimum hygienic conditions that prevents bacteria deposits from forming.

ADVANTAGES

- Hygienic surface that prevents bacteria
- Creates a clean, smooth surface that is easier to sterilise
- Improves corrosion resistance
- Polished areas that are inaccessible by other polishing methods.
- Sterilize workpieces



Stainless steel surface



Electropolished surface



QTS SERIES

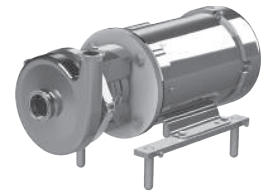
TWIN SCREW PUMPS FOR INFINITE APPLICATIONS

The QTS is a twin screw pump, 100% sanitary and ideal as a process pump and CIP, which reduces costs and maintenance times.

QC SERIES

EASY ASSEMBLY CENTRIFUGAL PUMPS

The QC + series is ideal for sanitary and non-sanitary applications, perfect for the food, beverage and agrochemical industries.



MIXERS SERIES

QIM, QDB, QVM

YOUR PROCESSES, EASIER

Created perfect solution for applications that require to be homogenized or disintegrated while being pumped. The most versatile mixers in the market.

QDU SERIES

THE FASTEST DRUM UNLOADER WITH THE LESS ENERGY CONSUMPTION

The QDU is a Drum Pump Unloader equipment, fully designed with an integrated QTS Pump linked to an electric motor, which allows savings in energy consumption 5 times less than the competitors.

