



THE BEAST HEAVY DUTY FLAP VALVE PUMPS

The only AODD Flap Valve Pump designed to reliably handle packable dust, small solids, slurries, and large solids



**WARREN
RUPP, INC.**

North America: 866 777 6060
Int'l: +1 267 404 2910

Springer Pumps
Springer Parts

www.springerpumps.com
www.springerparts.com

THE BEAST HEAVY DUTY FLAP VALVE PUMP – FEATURES & BENEFITS

Multiple Material Options – Aluminum, Cast Iron, Stainless Steel, and Polypropylene

Thick, Robust Wetted Chambers for enhanced abrasion resistance

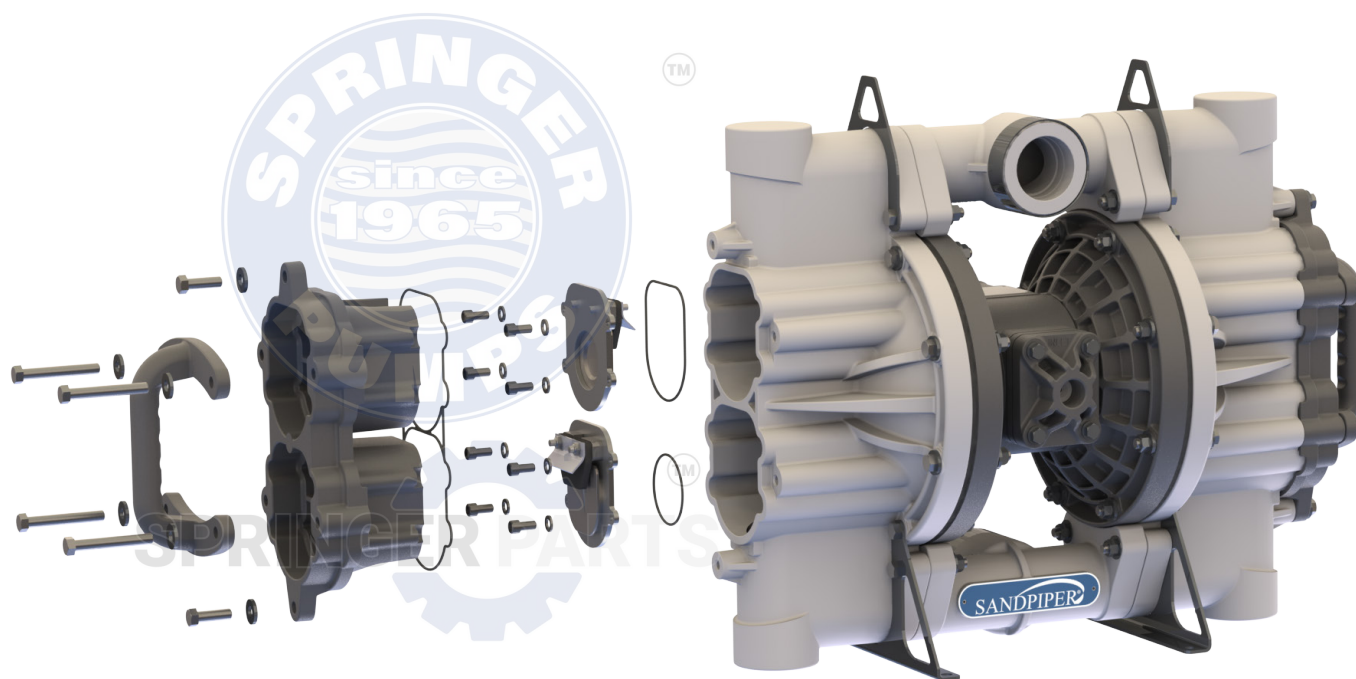
- Multiple Porting Sizes Available - 2", 3" & 4"

Top Suction / Bottom Discharge for easy passage of settling solids

All Bolted Construction for long term, leak free performance

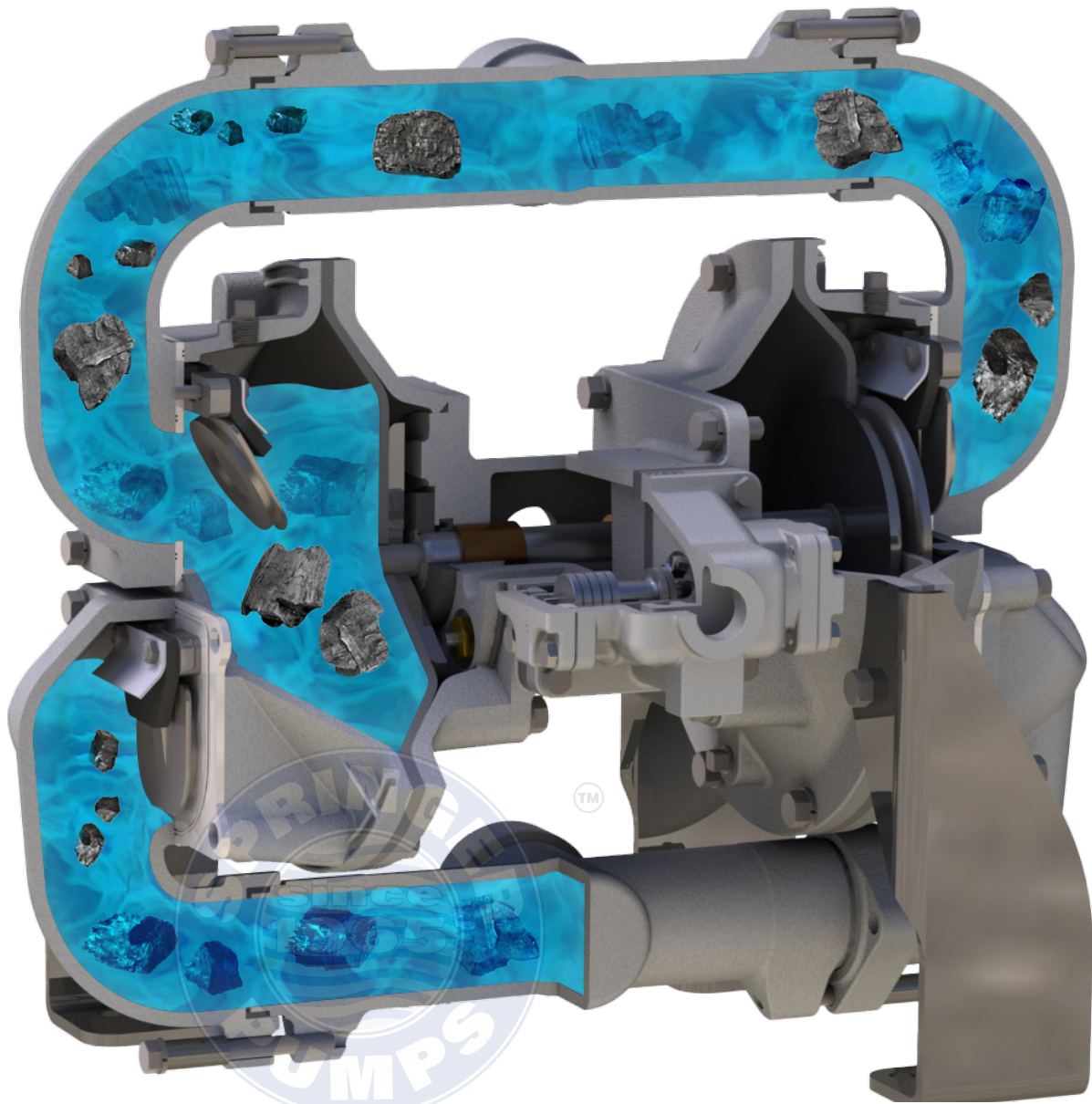
ESADS+ Air Distribution System for enhanced reliability and speedy serviceability

Best-In-Class Efficiency – lowest air consumption in its class



2" Non – Metallic (Polypropylene)

2", 3" & 4" Metallic



Additional Features Non-Metallic TM

Only 58 lbs (27 KG) for easy mobility and worker safety

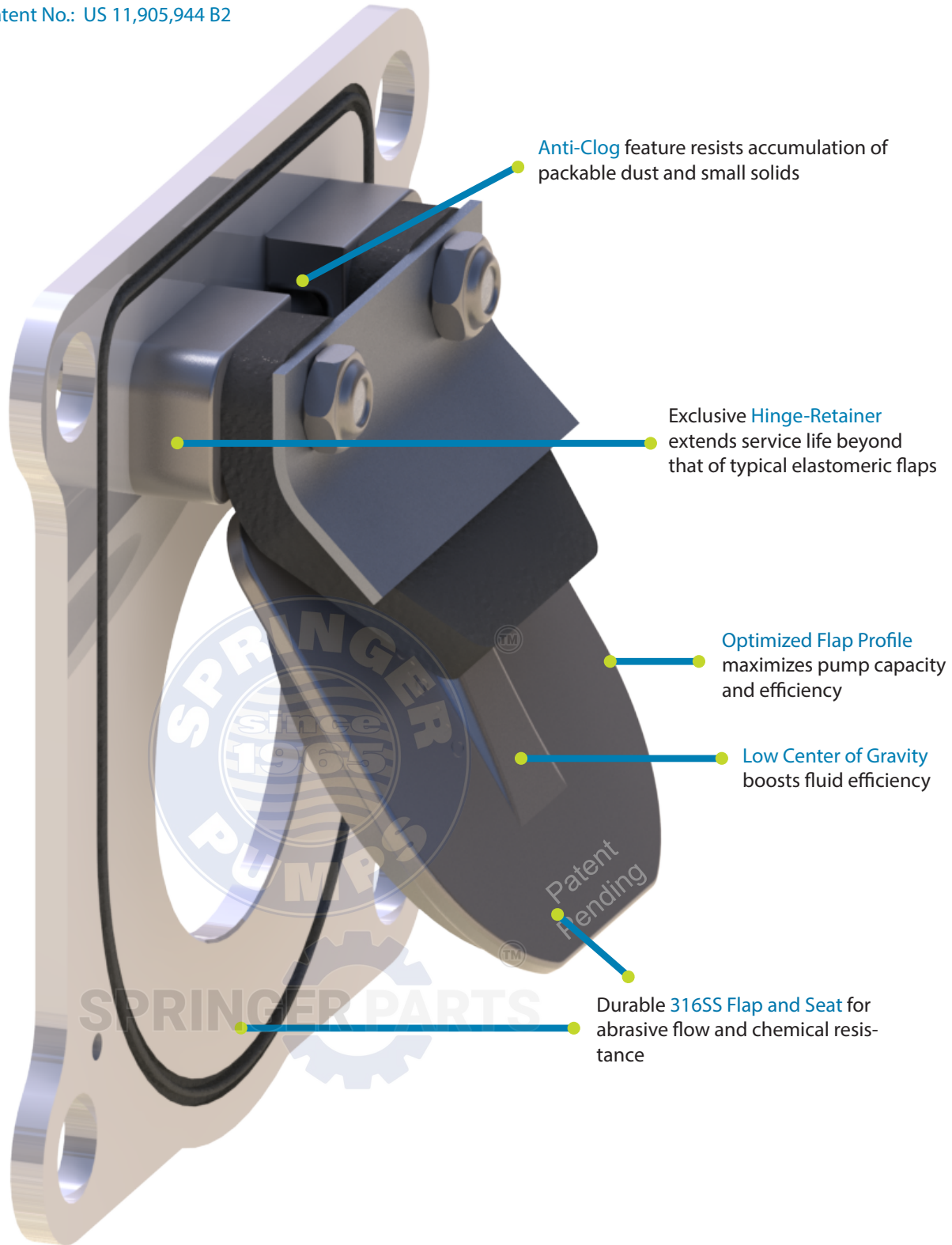
Clean-Out Caps for fast, simple maintenance or inspection without pump disassembly

Ergonomic Handles that can be positioned either horizontally or vertically

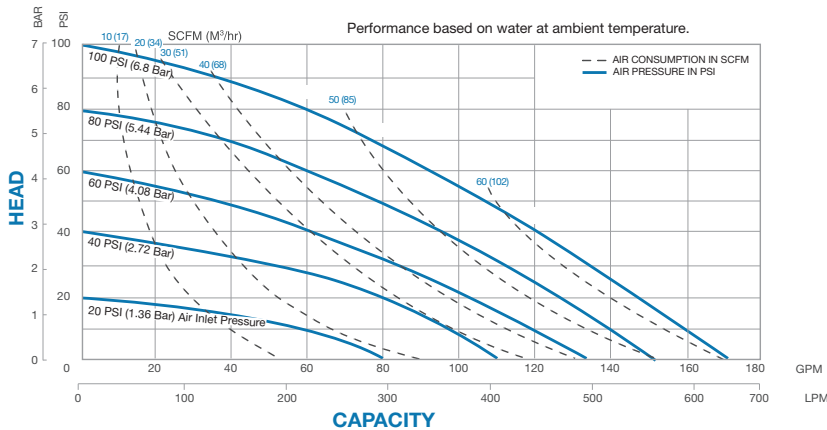
Fluid Connection Options – either FNPT, BSP or ANSI/DIN Flanged

PATENTED FLAP DESIGN – FEATURES & BENEFITS

Patent No.: US 11,905,944 B2



SPECIFICATIONS NON-METALLIC



FLOW RATE

Adjustable to 0-170 gpm (0-644 lpm)

PORT SIZE

Inlet and Outlet 2" NPT or BSPT

MAXIMUM OPERATING PRESSURE

100 psi (7 bar)

DISPLACEMENT/STROKE

.50 Gallon / 1.9 liter

MAX. PARTICLE SIZE

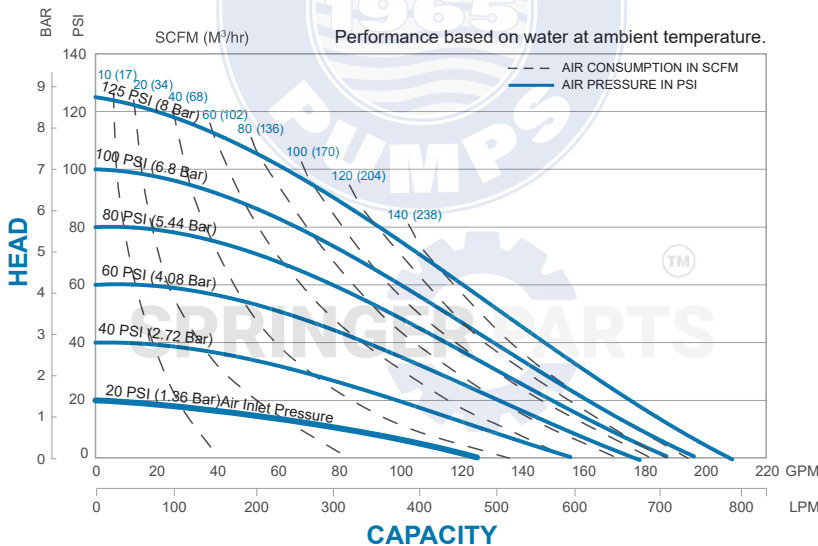
Diameter 1.8" (45mm)

SHIPPING WEIGHT

Pump: 58 lbs. (27kg)

Shipping: 70 lbs. (31.7kg)

SPECIFICATIONS 2" METALLIC



FLOW RATE

Adjustable to 0-208 gpm (0-787 lpm)

PORT SIZE

Inlet and Outlet 2" NPT or BSPT

MAXIMUM OPERATING PRESSURE

125 psi (8.6 bar)

DISPLACEMENT/STROKE

.50 Gallon / 1.9 liter

MAX. PARTICLE SIZE

Diameter 1.8" (45mm)

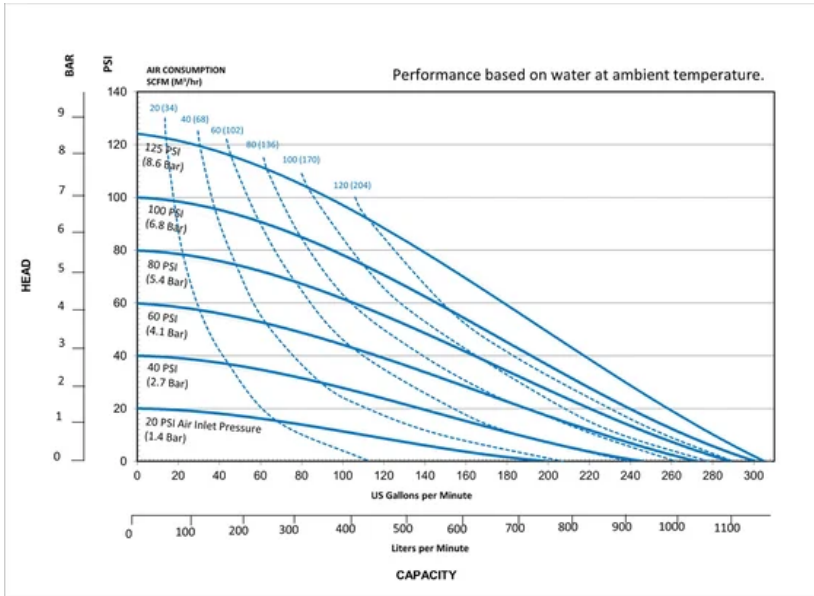
SHIPPING WEIGHT

Aluminum 88 lbs. (39.9kg)

Cast Iron 130 lbs. (59kg)

Stainless Steel 140 lbs. (63.5kg)

SPECIFICATIONS 3"/4" ALUMINUM



FLOW RATE

0 to 303 gpm (1147 lpm)

PORT SIZE

3" 150# ANSI Flange
4" 150# ANSI Flange

MAXIMUM OPERATING PRESSURE

100 psi (7 bar)

DISPLACEMENT/STROKE

1.15 gallons (4.37 liters)

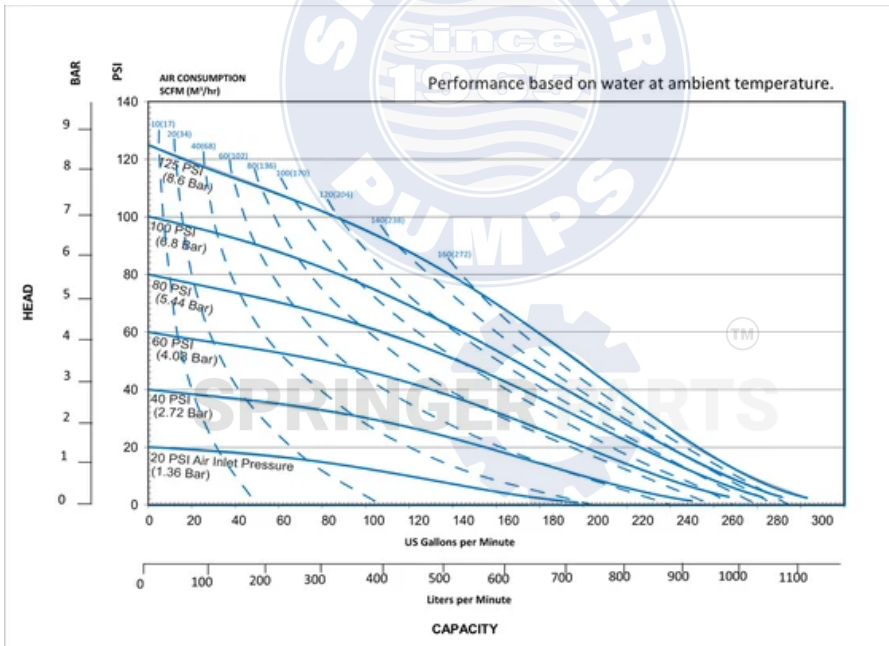
MAX. PARTICLE SIZE

Up to 3" (75 mm)

SHIPPING WEIGHT

SPB30 345 lbs (151 kg)
SPB40 415 lbs (182 kg)

SPECIFICATIONS 3"/4" CAST IRON



FLOW RATE

0 to 303 gpm (1147 lpm)

PORT SIZE

3" 150# ANSI Flange
4" 150# ANSI Flange

MAXIMUM OPERATING PRESSURE

125 psi (8.6 bar)

DISPLACEMENT/STROKE

1.15 gallons (4.37 liters)

MAX. PARTICLE SIZE

Up to 3" (75 mm)

SHIPPING WEIGHT

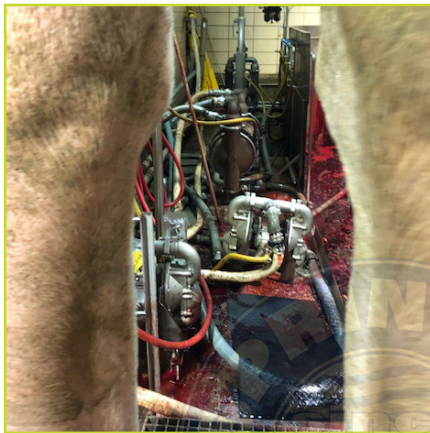
SPB30 400 lbs (175 kg)
SPB40 470 lbs (206 kg)

COMMON BEAST APPLICATIONS



Mine Dewatering

- Coal slurry transfer
- Mine face dewatering
- Roadway and drift water evacuation



Meat & Poultry Processing

- Animal blood transfer
- Eviscerated animal parts transfer
- Wastewater sludge



Chemical Sumps

- Debris (leaves & needles, dirt, trash, ear plugs, etc...)
- Stray chemicals
- Variable fluid depths

SANDPIPER[®]

Warren Rupp, Inc.
A Unit of IDEX Corporation
800 North Main Street
Mansfield, OH 44902 USA



Scan to learn more

Phone: 419.524.8388
Fax: 419.522.7867
SANDPIPERPUMP.COM



Visit www.sandpiperpump.com and click on "Find a distributor" to contact your local distributor to place your order

©Copyright 2025 Warren Rupp, Inc. All Rights Reserved.

SP_BEASTBrochure-rev1025

North America: 866 777 6060
Int'l: +1 267 404 2910

Springer Pumps
Springer Parts

www.springerpumps.com
www.springerparts.com