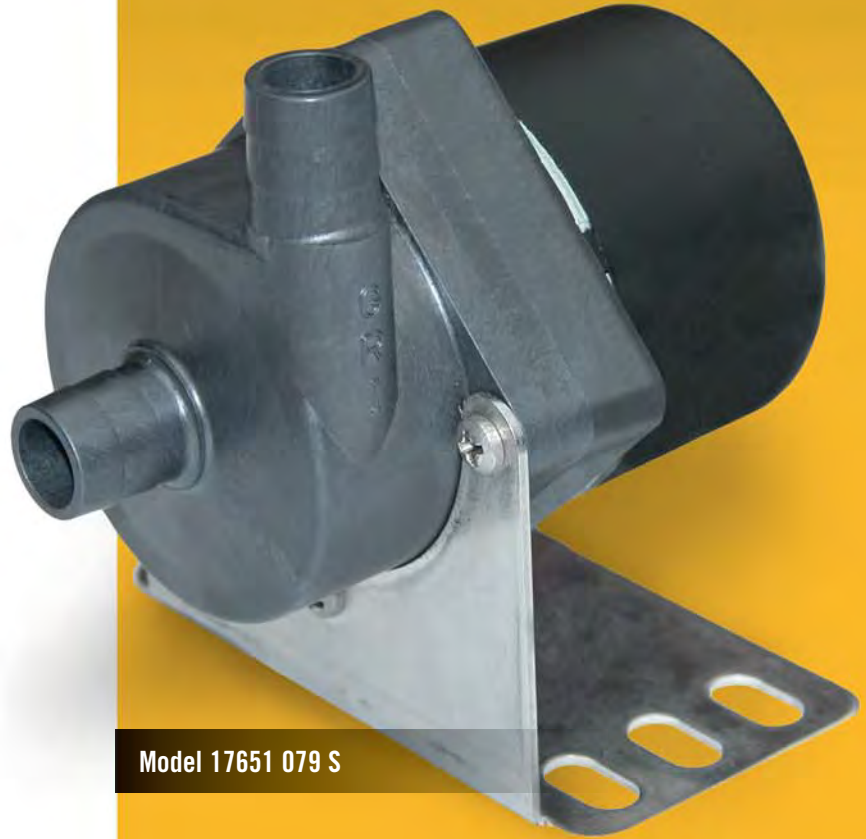


MAGNETIC DRIVE PUMPS

*14520 Series, 15650 Series,
 17650 Series, 18650 Series*

- Corrosion Resistant
- Dry Run Capability
- Hydraulically Efficient
- Quiet Operation
- No Shaft Seals
- Flexible Mounting and Body Discharge Position
- Low Current Draw and Heat Rise
- Maximum Flow 35 GPM
- Maximum System Pressure 75 PSI
- Maximum Head 53 Ft.
- Maximum Temperature 203° F
- Available in Noryl[®], Polypropylene, or Ryton[®] bodies



Model 17651 079 S



Model 14520 051 S

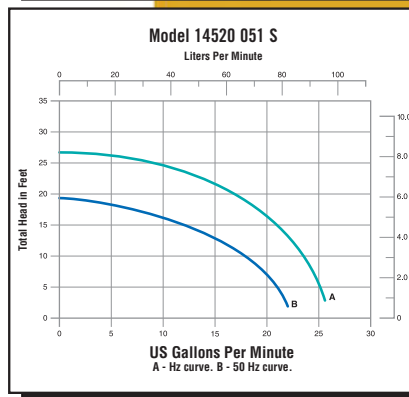
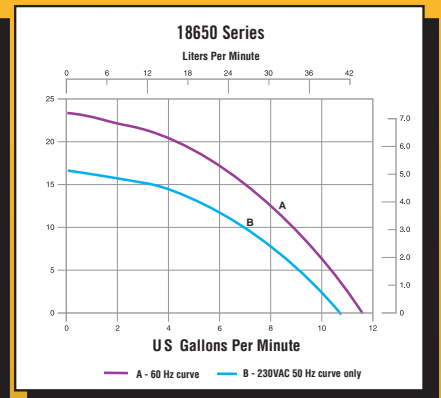
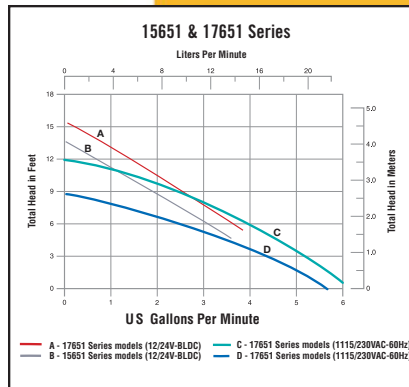


Model 18650 051 S

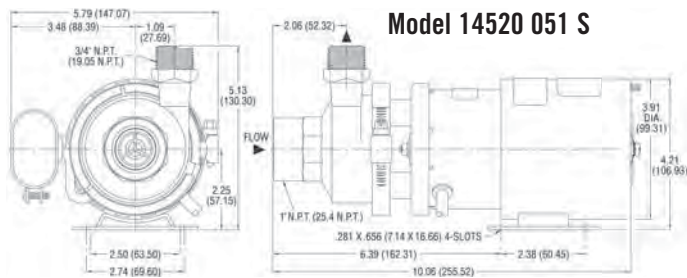
Operation is similar to the standard centrifugal pumps, except the impeller is driven with a magnetic coupling, eliminating the need for a shaft seal. Magnetic drive pumps must be used where flooded suction exists. Typical OEM applications include film processors, laser and x-ray cooling systems, medical, scientific and laboratory equipment and silver recovery equipment.

WARNING: Do not use in explosive atmosphere or for pumping volatile flammable liquids.

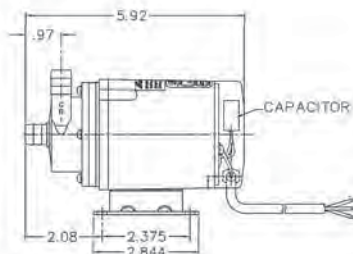
Ryton[®] is a registered trademark of Chevron-Phillips.
 Noryl[®] is a registered trademark of General Electric Co.



MAGNETIC DRIVE PUMPS

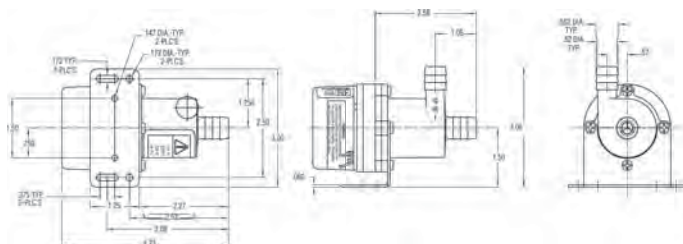
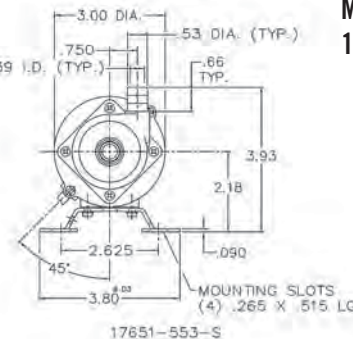
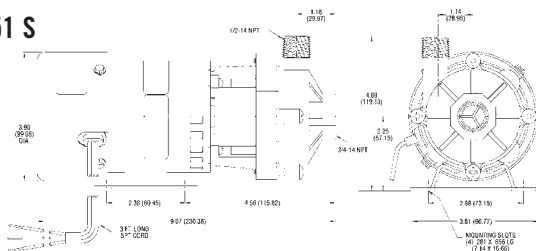


Model 14520 051 S

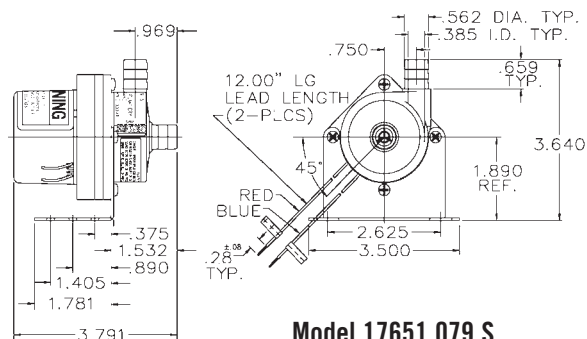


Model 17651 553 S

Model 18650 051 S



Model 15651 073 S



Model 17651 079 S

MODEL SPECIFICATIONS

MODEL	ELECTRICAL CHARACTERISTICS					MATERIALS IN CONTACT WITH SOLUTION						CONNECTION SIZE/TYPE		MAX FLUID TEMP.	SHIP WT.
	VOLTAGE	MOTOR TYPE	SHELL	HZ	AMPS*	BODY	IMPELLER	SHAFT	BEARINGS	O-RING	INLET	OUTLET	F°		
15651 073 S	12V-DC	Brushless	I.P. 30	-	1.5	Vectra®	Vectra®	Ceramic	Teflon®	Viton®	1/2" MHB	1/2" MHB	203	1 lbs.	
15651 075 S	24V-DC	Brushless	I.P. 30	-	0.75	Vectra®	Vectra®	Ceramic	Teflon®	Viton®	1/2" MHB	1/2" MHB	203	1 lbs.	
17651 079 S	12V-DC	Brushless	I.P. 30	-	1.5	Vectra®	Vectra®	Ceramic	Teflon®	Viton®	1/2" MHB	1/2" MHB	203	2 lbs.	
17651 081 S	24V-DC	Brushless	I.P. 30	-	0.75	Vectra®	Vectra®	Ceramic	Teflon®	Viton®	1/2" MHB	1/2" MHB	203	2 lbs.	
17651 551 S	115	1/60 HP SP	TENV	50/60	1	Noryl®	Vectra®	Ceramic	Teflon®	Viton®	1/2" MHB	1/2" MHB	203	3 lbs.	
17651 553 S	230	1/60 HP SP	TENV	50/60	1	Noryl®	Vectra®	Ceramic	Teflon®	Viton®	1/2" MHB	1/2" MHB	203	3 lbs.	
18650 051 S	115	1/12 HP SP	ODP	60	2.7	Polypropylene	Vectra®	Ceramic	Ceramic	Viton®	3/4" FPT	1/2" MPT	180	7 lbs.	
18650 053 S	230	1/12 HP SP	ODP	50/60	1.4	Polypropylene	Vectra®	Ceramic	Ceramic	Viton®	3/4" FPT	1/2" MPT	180	7 lbs.	
14520 051 S	115	1/5 HP PSP	TEFC	50/60	2.1	Ryton®	Ryton®	Ceramic	Carbon/Ceramic	Viton®	1" FPT	3/4" MPT	203	8 lbs.	
14520 053 S	230	1/5 HP PSP	TEFC	50/60	1.1	Ryton®	Ryton®	Ceramic	Carbon/Ceramic	Viton®	1" MPT	3/4" FPT	203	8 lbs.	

(* AMP VALUES AS SHOWN ARE MAX RUNNING AMPS.

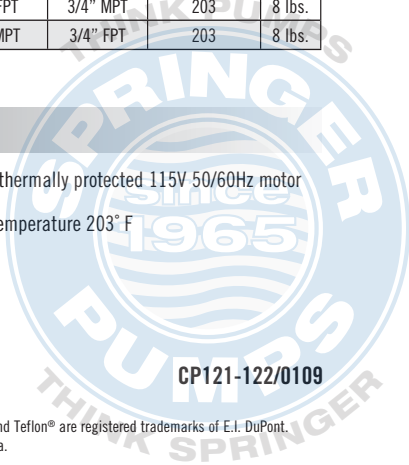
NOTE: .38 x .38 tubing.

Standard Features:

- Viton® Elastomers
- Impellers in either Vectra® or Ryton® with Epoxy adhesive
- Maximum system pressure to 75 PSI
- Drip-proof, shaded pole 115V 50/60 Hz motor
- TEFC, PSC, thermally protected 115V 50/60Hz motor
- Maximum temperature 203° F



The Gorman-Rupp Company reserves the right to discontinue any model or change specifications at any time without incurring any obligation. Viton® and Teflon® are registered trademarks of E.I. DuPont. Ryton® is a registered trademark of Chevron-Phillips. Noryl® is a registered trademark of General Electric Co. Vectra® is a registered trademark of Ticona.



CP121-122/0109